

**Requirement**

OS: Windows Server 2003 Service Pack 2; Windows Server 2008; Windows Vista; Windows Vista Service Pack 1; Windows XP Service Pack 2; Windows XP Service Pack 3

.Net Framework: .Net Framework 3.5 SP1, .Net Framework 2.0 SP2

Windows installer: Windows Installer 4.5

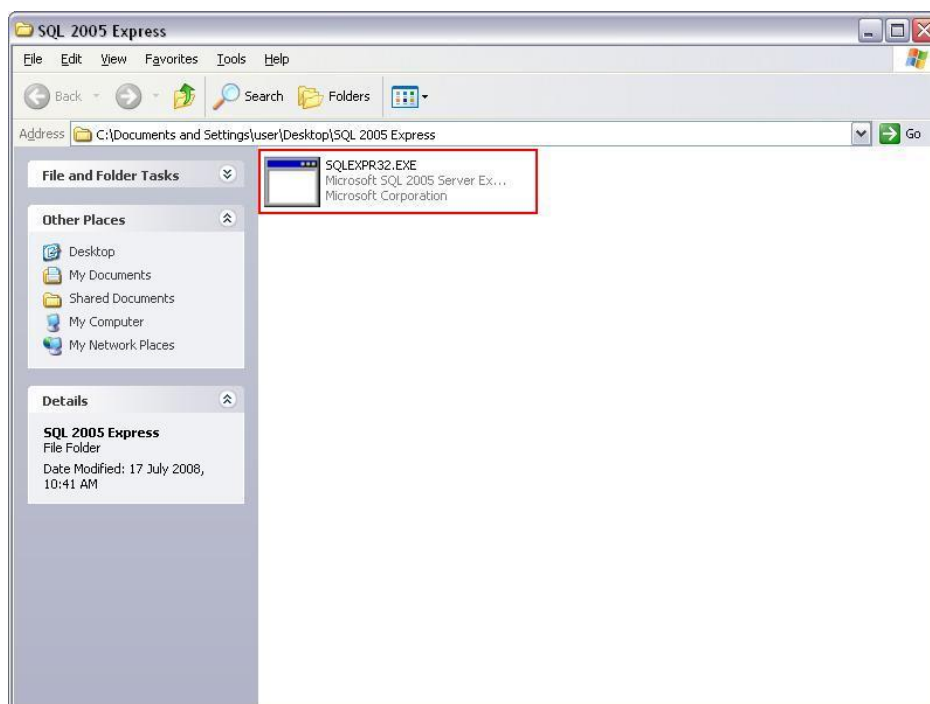
**Download Path**

Microsoft SQL server 2008 express and all related applications

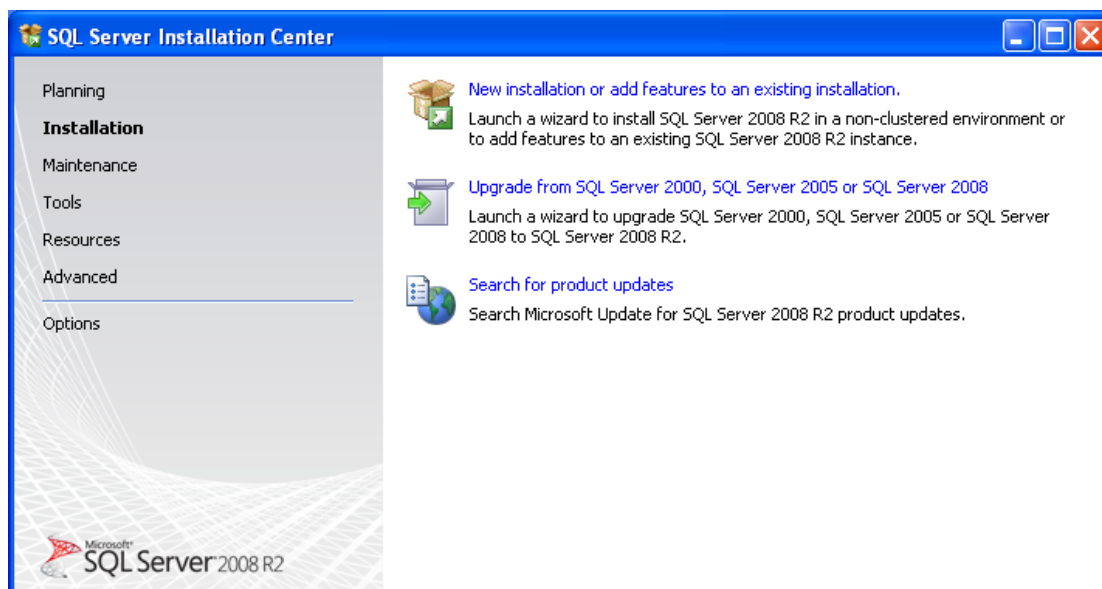
<http://www.microsoft.com/downloads/details.aspx?FamilyID=58ce885d-508b-45c8-9fd3-118edd8e6fff&DisplayLang=zh-en>

## Installation procedure for Microsoft SQL Server 2008 Express

1. Run the “SQLEXP32\_x86\_ENU.exe” file that you downloaded from Microsoft.

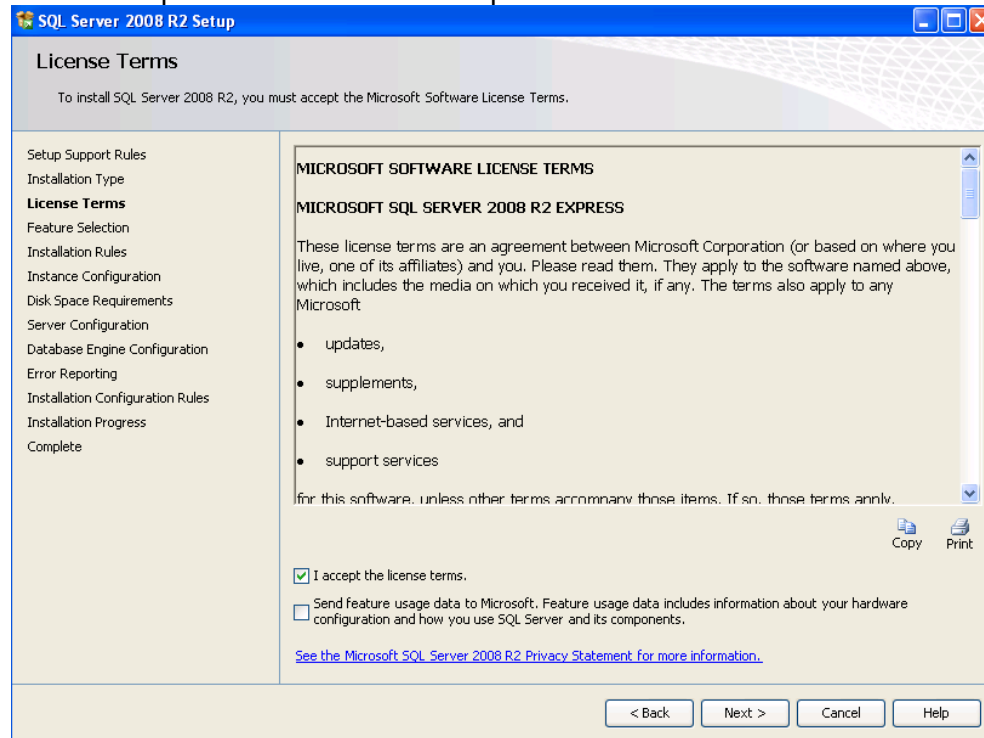


2. Select “New Installation or add features to an existing installation”



### 3. License Term

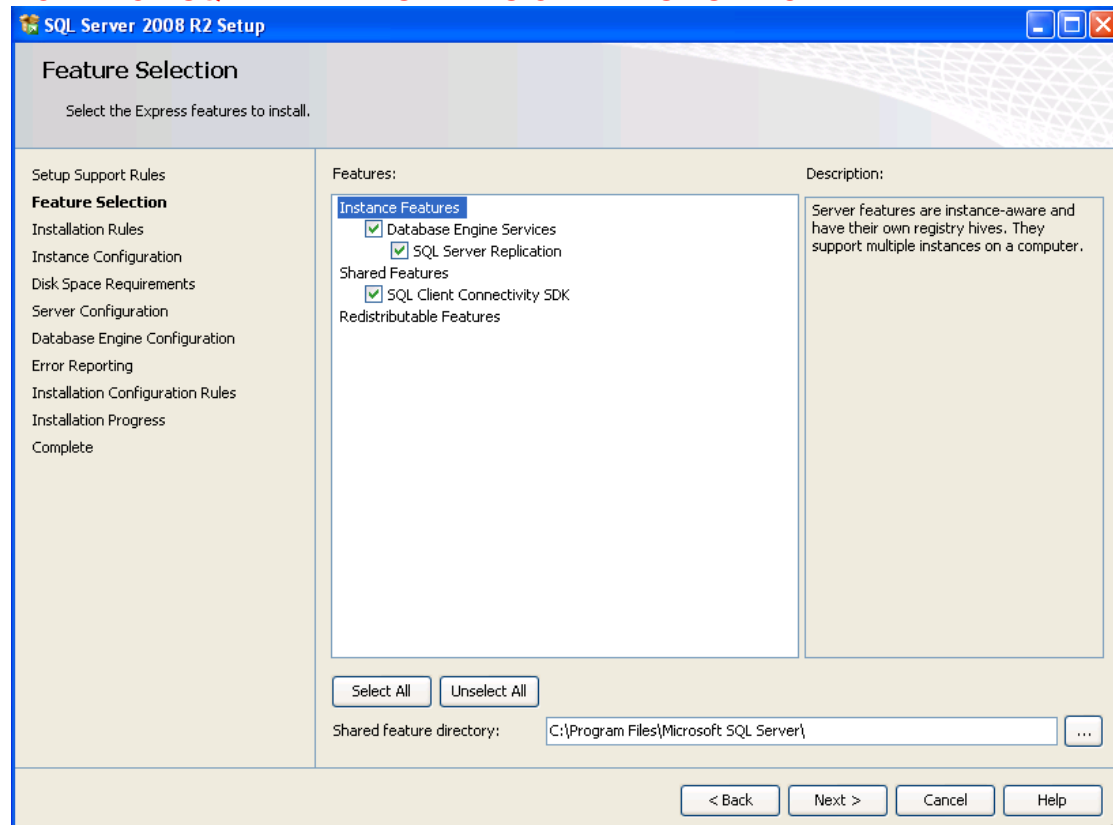
Tick "I accept the license terms" and press next



### 4. Feature Selection

Select Database Engine Service, SQL Server Replication, SQL Client Connectivity SDK and press next

**NOTE: FOR SQL ENTERPRISE VERSION PLEASE SELECT ALL**



## 5. Instance configuration

Select Default instance and press next

**NOTE: FOP WIN2008 + SQL 2008 ENTERPRISE VERSION SELECT NAMED INSTANCE**

The screenshot shows the 'Instance Configuration' dialog box in the SQL Server 2008 R2 Setup wizard. The title bar reads 'SQL Server 2008 R2 Setup'. The main heading is 'Instance Configuration' with a subtitle: 'Specify the name and instance ID for the instance of SQL Server. Instance ID becomes part of the installation path.'

On the left is a navigation pane with the following items: Setup Support Rules, Feature Selection, Installation Rules, **Instance Configuration**, Disk Space Requirements, Server Configuration, Database Engine Configuration, Error Reporting, Installation Configuration Rules, Installation Progress, and Complete.

The main area contains the following configuration options:

- Default instance
- Named instance:
- Instance ID:
- Instance root directory:  ...
- SQL Server directory:
- Installed instances:

Instance Name	Instance ID	Features	Edition	Version
---------------	-------------	----------	---------	---------

At the bottom are four buttons: '< Back', 'Next >', 'Cancel', and 'Help'.

## 6. Server Configuration

Account Name: NT AUTHORITY \SYSTEM and click on Collation Tab

### Server Configuration

Specify the service accounts and collation configuration.

- Setup Support Rules
- Feature Selection
- Installation Rules
- Instance Configuration
- Disk Space Requirements
- Server Configuration**
- Database Engine Configuration
- Error Reporting
- Installation Configuration Rules
- Installation Progress
- Complete

Service Accounts Collation

Microsoft recommends that you use a separate account for each SQL Server service.

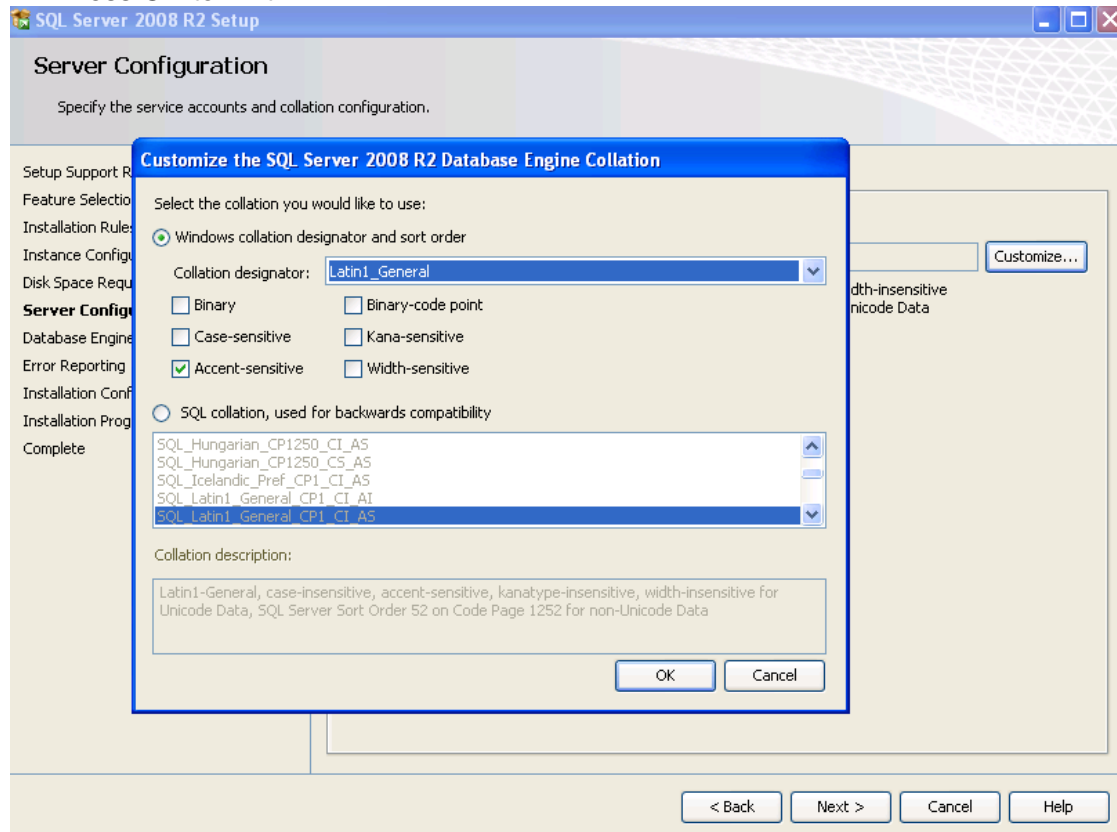
Service	Account Name	Password	Startup Type
SQL Server Database Engine	NT AUTHORITY\SYSTEM		Automatic
SQL Server Browser	NT AUTHORITY\NETWORK SERVICE		Disabled
	NT AUTHORITY\SYSTEM		
	<<Browse...>>		

Use the same account for all SQL Server services

## 7. Server Configuration – Collation

Click on Customize tab and set collations

1. select Window Collation designator for sort and order
2. in collation designator select Latin1\_General
3. select Accent-Sensitive
4. Press OK to Exit



## 8. Database Engine Configuration

Make sure it is window authentication mode and add current user than click next

**NOTE: FOR WIN2008 + SQL 2008 ENVIRONMENT SELECT MIX MODE**

The screenshot shows the 'Database Engine Configuration' window in the SQL Server 2008 R2 Setup. The window title is 'SQL Server 2008 R2 Setup' and the subtitle is 'Database Engine Configuration'. Below the subtitle, it says 'Specify Database Engine authentication security mode, administrators and data directories.' The window is divided into a left sidebar and a main content area. The sidebar contains a list of setup steps: Setup Support Rules, Feature Selection, Installation Rules, Instance Configuration, Disk Space Requirements, Server Configuration, **Database Engine Configuration** (highlighted), Error Reporting, Installation Configuration Rules, Installation Progress, and Complete. The main content area has four tabs: 'Account Provisioning' (selected), 'Data Directories', 'User Instances', and 'FILESTREAM'. Under the 'Account Provisioning' tab, there are instructions to 'Specify the authentication mode and administrators for the Database Engine.' The 'Authentication Mode' section has two radio buttons: 'Windows authentication mode' (selected) and 'Mixed Mode (SQL Server authentication and Windows authentication)'. Below this, there are two text boxes for 'Enter password:' and 'Confirm password:'. The 'Specify SQL Server administrators' section contains a list box with one entry: 'IPG-JDORR6ZBQLA\Administrator (Administrator)'. To the right of the list box is a warning box that says 'SQL Server administrators have unrestricted access to the Database Engine.' At the bottom of the list box are three buttons: 'Add Current User', 'Add...', and 'Remove'. At the bottom of the window are four buttons: '< Back', 'Next >', 'Cancel', and 'Help'.

## 9. Error Report

Click next

## Error Reporting

Help Microsoft improve SQL Server features and services.

- Setup Support Rules
- Feature Selection
- Installation Rules
- Instance Configuration
- Disk Space Requirements
- Server Configuration
- Database Engine Configuration
- Error Reporting**
- Installation Configuration Rules
- Installation Progress
- Complete

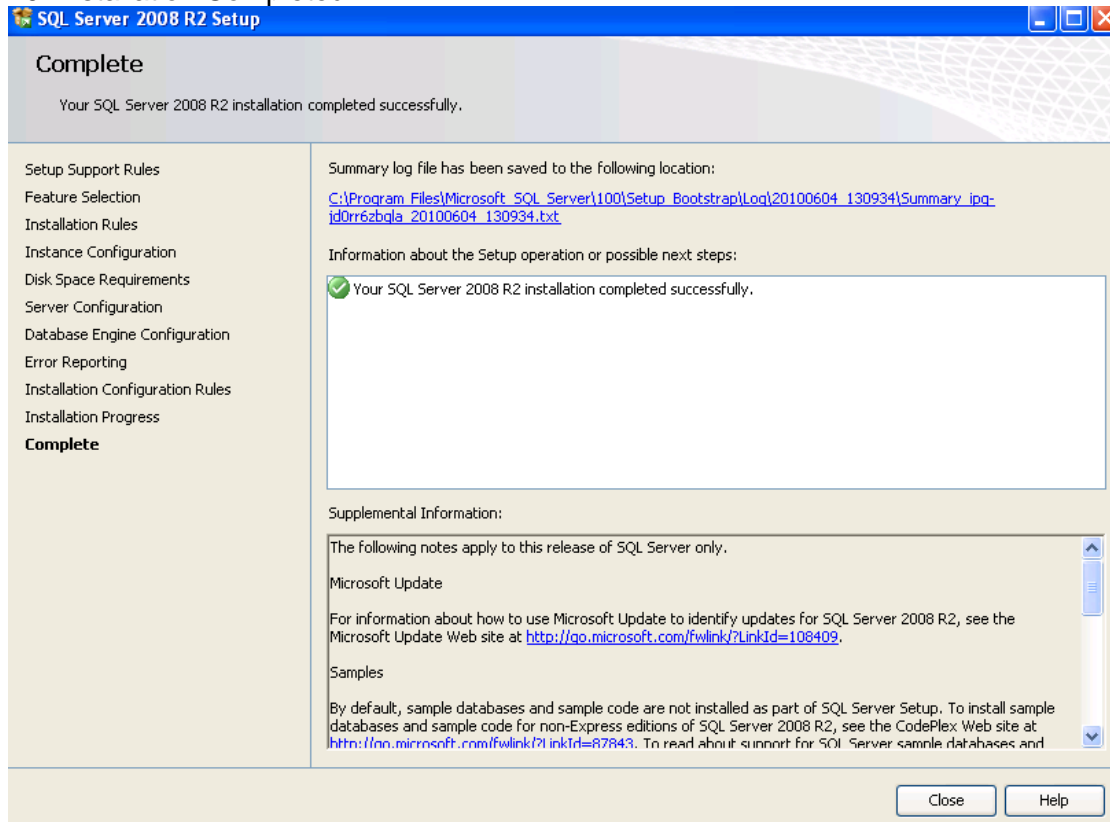
Specify the information that you would like to automatically send to Microsoft to improve future releases of SQL Server. These settings are optional. Microsoft treats this information as confidential. Microsoft may provide updates through Microsoft Update to modify feature usage data. These updates might be downloaded and installed on your machine automatically, depending on your Automatic Update settings.

[See the Microsoft SQL Server 2008 R2 Privacy Statement for more information.](#)

[Read more about Microsoft Update and Automatic Update.](#)

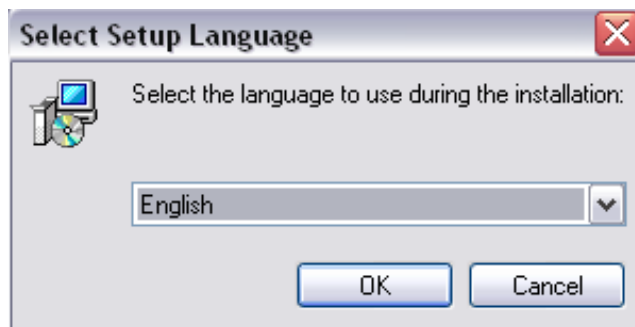
Send Windows and SQL Server Error Reports to Microsoft or your corporate report server. This setting only applies to services that run without user interaction.

## 10. Installation Completed

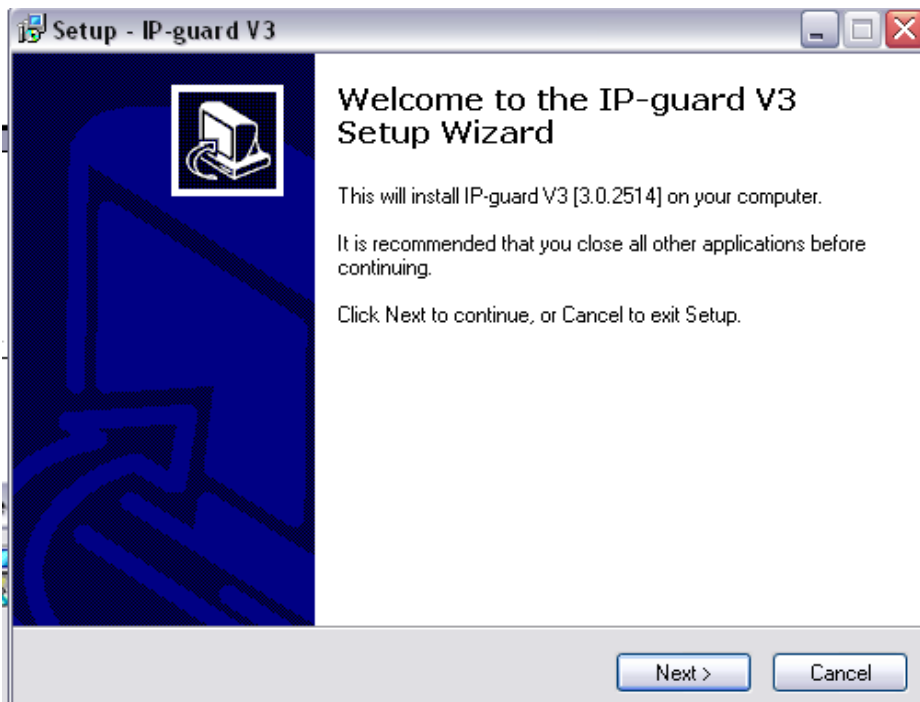


## install the IP Guard server application

1. Run the “**IPguard3.0.2825.exe**” to install the IP-guard server and console on the PC. Click next to continue



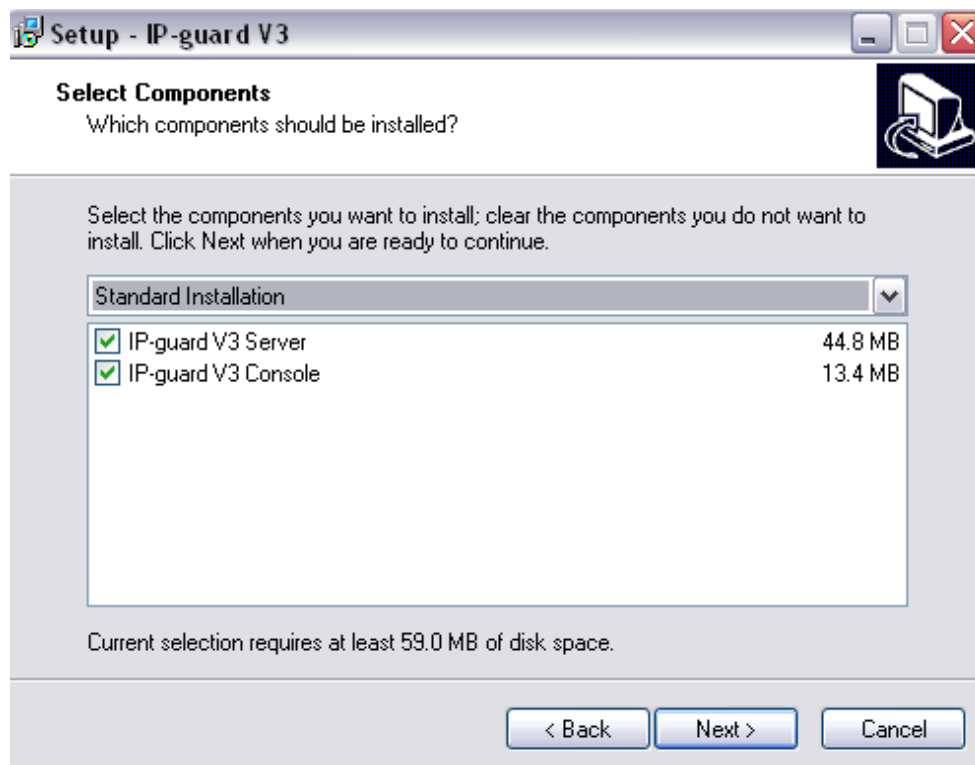
2. Click next to continue



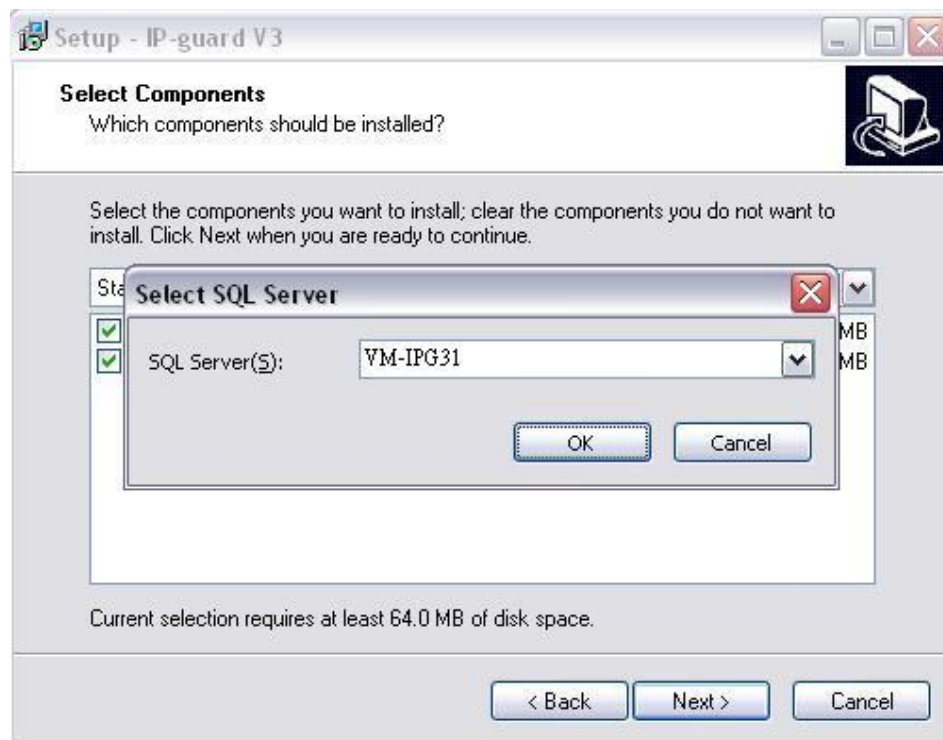
3. Click next to continue



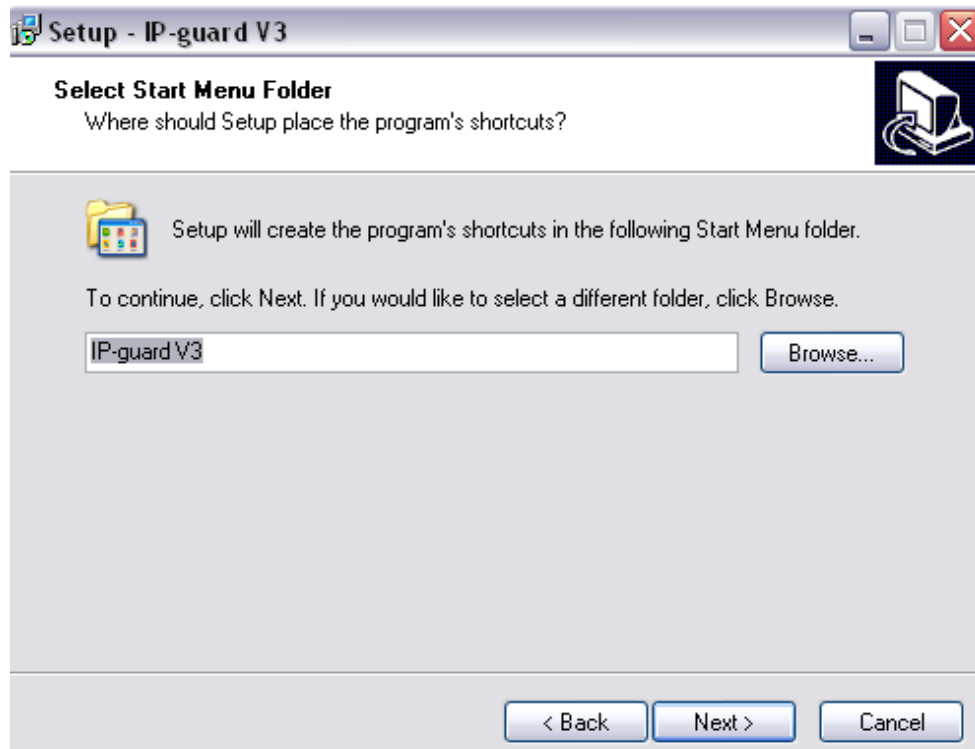
4. Choose which one you want to install and click next.



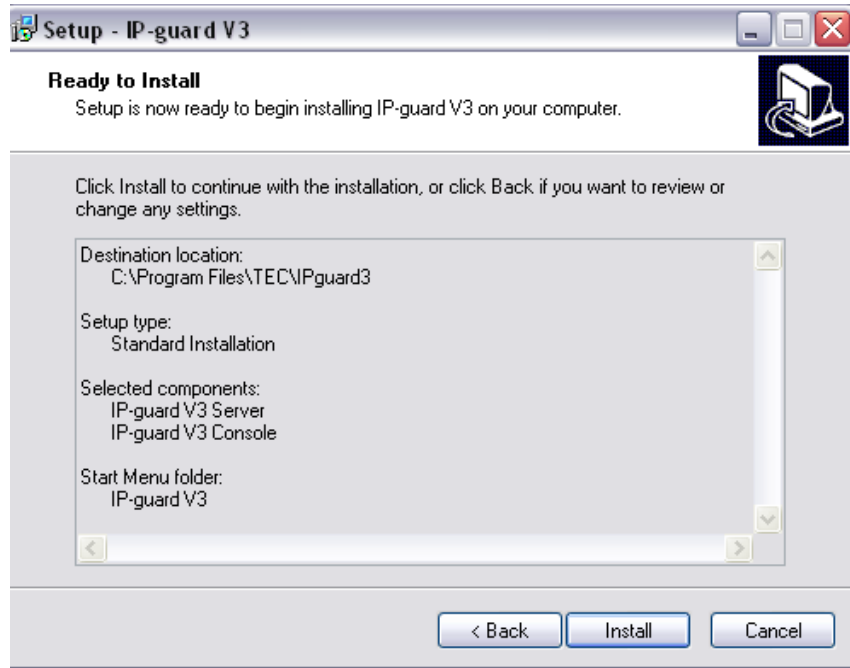
5. Select the SQL server that you want to use. Then click “OK”



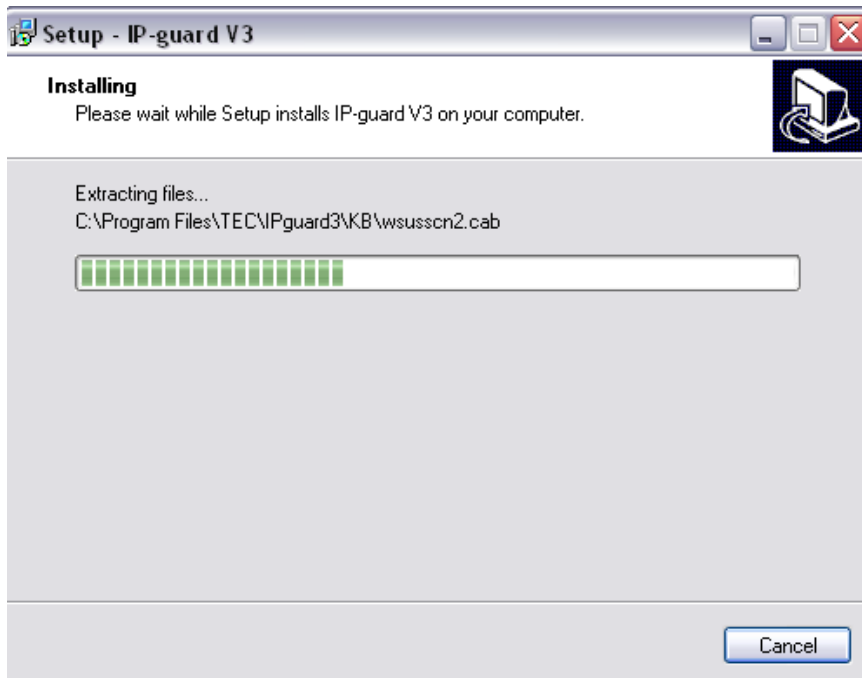
5. Click “Next” to continue



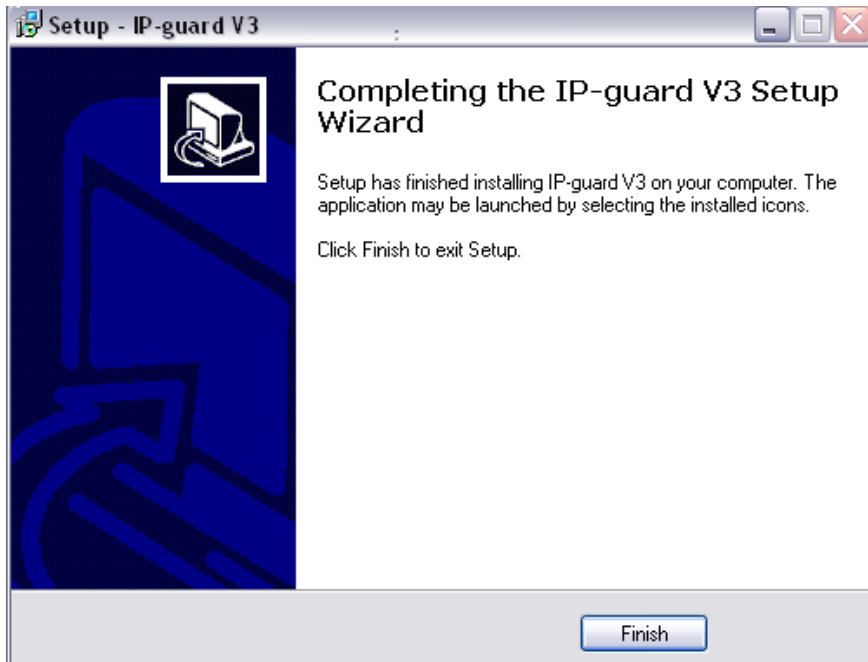
6. Click install to install IP-Guard



7. The IP-Guard will now install



8. Click finish to complete the installation



9. Once the installation is complete, you will notice the IP Guard server icon in the bottom right corner of the screen. Wait for the IP Guard server to turn green to show that it's running.



### **How to register the IP Guard server with Trial License**

1. When the server icon turns green , right-click the server icon, go to tools and then register



2. In the pop-up window, click upgrade and enter the serial number then click ok. Enter the registration ID and click register
3. Now the IP-guard server installation and registration is completed.



### **How to register IP-guard with Official License**

Before you enter the official license, please make sure the computer that IP-guard server is installed on can connect to the internet.

### **Use “Register Online” function (when you first register)**

1. When the server icon turns green, right-click the server icon, go to tools and then register. In the pop-up window, click upgrade and enter the serial number, then click ok,



Register (To 2008-10-10)

Serial Number

SN: 1111-5B3B-N7KF-58BV-W2HE-G41M

(Trial, 40 Agents License) Upgrade

Product Registration

Company: \_\_\_\_\_

Tel: \_\_\_\_\_

Contact: \_\_\_\_\_

E-Mail: \_\_\_\_\_

Register Online Send Mail

Register

PID: \_\_\_\_\_

RID: \_\_\_\_\_

Register

Close

2. Fill the all information in “Product Registration”. The E-mail address must be active.
3. After entered all information, click “Register Online”, IP-guard will connect to the internet and get the Registration ID automatically.
4. Once the RID has been generated, click “ok” to finish the registration with an official license.

### **Use “Send Mail” function**

The “Send Mail” function is for when you can’t use “Register Online” and receive “Error code: 1”. It will happen when you move the IP-guard server to another machine or hard drive. (The official license has already been registered online)

If you face this situation, follow these steps:

1. Click “Send Mail”
2. The system will open your E-mail application and generate a mail automatically. The mail will include all the necessary information
3. After check all information is correct, send the mail. The mail will be sent to the licensing server.
4. After the licensing server has checked your information, it will send a mail to your E-mail address (the one entered the first time you registered)

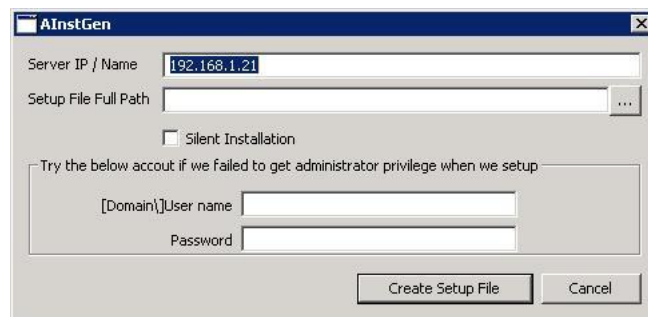
5. Click the link in the mail; this will take you to a webpage, with your registration ID showing.
6. Enter the Register ID shown on the website, in your IP-guard server then click “register”, and then finish the registration with IP-guard server.

## **How to install the Agent installation file**

### **Manual Install:**

#### **A. Generate Agent installation file**

1. After you finish installing the IP-guard server, go Start=>All Programs=>IP-guard V3=>Agent Installation Generator



2. In the pop-up window, enter the Server IP (the server needs to set for fixed IP)
3. Enter the Full Path of where you would want the file to be generated
4. Choose the “Silent Installation” (optional)
5. Click “Create Setup file”, the agent installation file will be generated automatically. ( A pop-up window will appear when the generation is successful)
6. Click “close” to finish

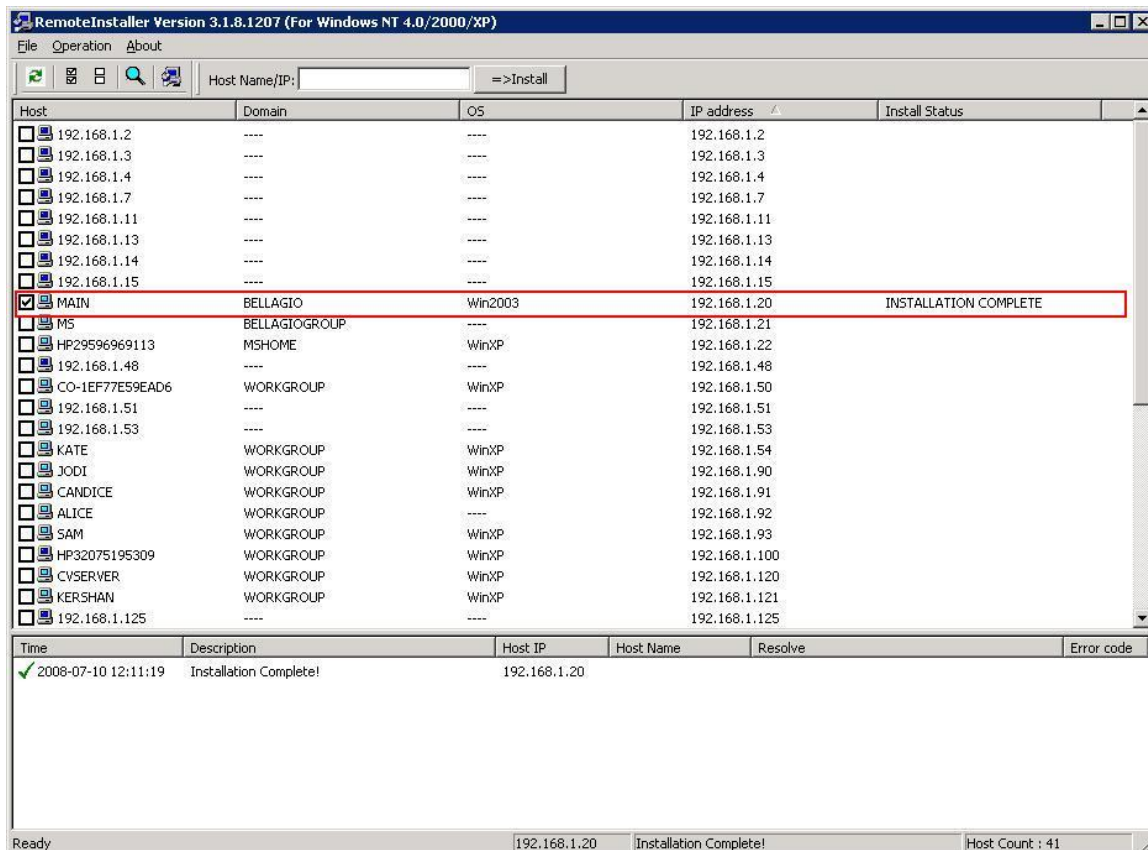
#### **B. Install IP-guard application on Agents computer**


1. Copy the agent installation file to the users computer
2. Double click the installation file, this will then run automatically
3. The installation is now complete.

### **Remote Install:**

This method is to install Agents on Windows NT4/2000/XP remotely. When using Remote Agent Installer, please make sure all computers have already been in the same Active Directory and log in as domain administrator.

1. On the IP-Guard Server, click “**Start->All Programs->IP-GuardV3->Remote Agent Installer**”.



2. Inside the management windows, all of the computers will be classified into different types (Online and Agent installed).
3. Select the computer that you want to install the IP-guard agent to. then click  to install. (the button is on the tool bar)
4. During the remote Agent installation, the Remote Agent Installer may prompt for local administrator username and password. Please enter the right administrator username and password.
5. Installation will run automatically.