

Module Description

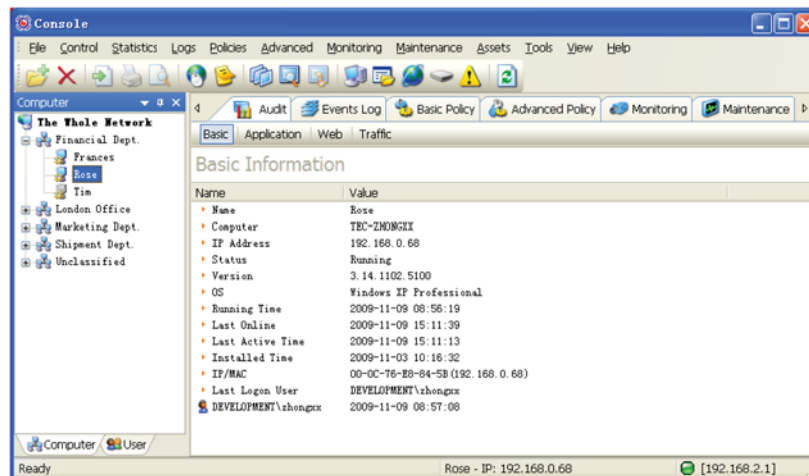
Basic Management module is the essential part of IP-guard. It includes all the basic functions such as basic information, basic control (e.g., lock, turn off, restart and log off agent computers), basic log, basic policy and system alert, etc.

Features

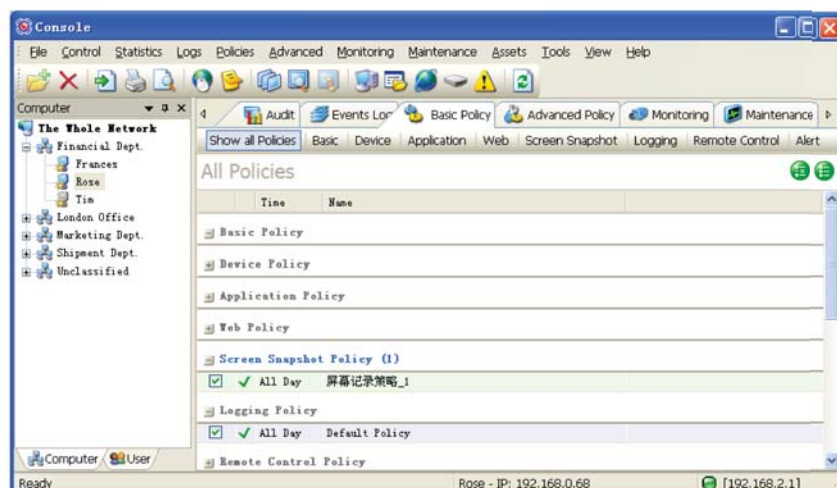
- Support multi-language interface
- Control the setting of control panel, computer management, network configuration, IP/MAC binding and ActiveX controls
- Basic controls include system lock, unlock, turn off, restart and log off agent computers.
- Powerful search engine to retrieve target information
- Export and import event logs

Basic Management of IP-guard

Basic Management module is the basic part of IP-guard and includes all basic functions. It includes basic information, basic control (e.g., lock, turn off, restart and log off agent computers), basic log, basic policy and system alert.



Basic information (e.g., computer name, IP address, logon user, status) of selected computer can be viewed on IP-guard console.



All policies are showed such as Application Policy, Basic Policy and Device Policy.

Basic Control

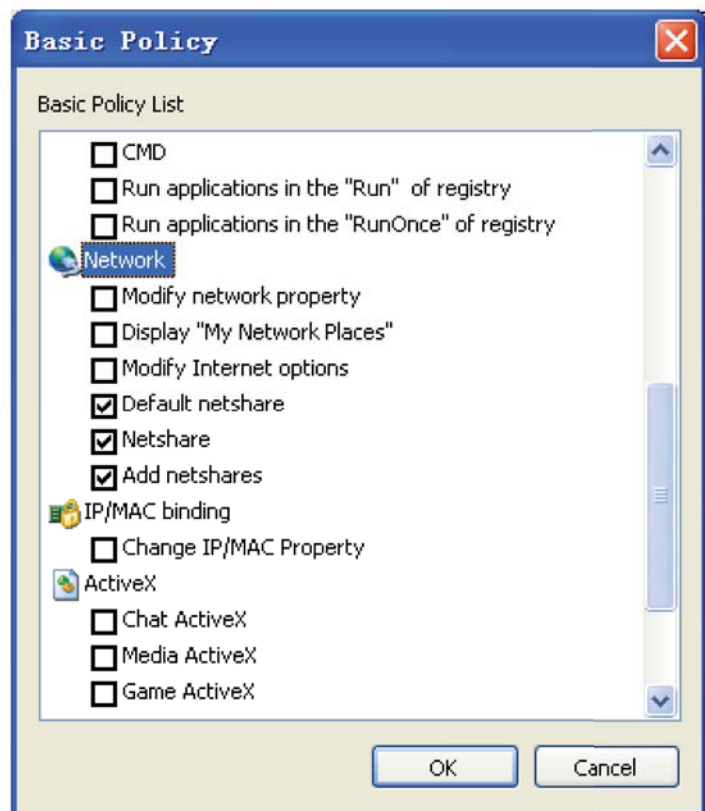
- Block Control Panel
- Block Computers Management
- Block Task Manager and Regedit
- Block Command Prompt
- Block modification of Network Property
- Prevent modification of IP/Mac Property
- Block ActiveX

Basic Logs

- Record system startup and shutdown
- Record user logon and logoff
- Provide dial-up logs

System Alert

- Give alert when hardware and software assets changes
- Give alert when removable storage devices or communications devices are plugged in or removed
- Give alert when system information is changed
- Give alert when network configuration is changed



More Suggestions

There are thirteen more modules of IP-guard available for your selection. You can pick your desired modules based on your needs. For details, please refer to the information of corresponding modules.

Available Modules for Your Selection

- | | |
|---------------------------|--------------------------------|
| ● Application Management | ● IT Asset Management |
| ● Bandwidth Management | ● Network Management |
| ● Basic Management | ● Print Management |
| ● Device Management | ● Remote Maintenance |
| ● Document Management | ● Removable Storage Management |
| ● Email Management | ● Screen Monitoring |
| ● IM Management | ● Website Management |